
	<p>HEALTH, SAFETY, ENVIRONMENT AND QUALITY MANAGEMENT SYSTEM</p> <p><b>4.8. PERSONAL PROTECTIVE EQUIPMENT</b></p> <p>HSE PROCEDURES MANUAL</p>	<p>Sect : 4.8  Page : 1 of 6  Date : 7-Aug-25  Rev : 10.2  Appr : DPA</p>
---	--	---

# CONTENTS

<b>PERSONAL PROTECTIVE EQUIPMENT .....</b>	<b>2</b>
1. GENERAL .....	2
2. CLOTHING.....	2
2.2. Ear Plugs / Defenders .....	2
2.3. Footwear .....	2
2.4. Gloves.....	3
2.5. Goggles.....	3
2.6. Safety Helmets .....	3
2.7. Safety Harness.....	4
2.8. Fall Arrestors .....	4
2.9. Work Vest .....	4
3. PPE WHILE USING DENJET .....	5
4. APPLICABILITY .....	6

	<p>HEALTH, SAFETY, ENVIRONMENT AND QUALITY MANAGEMENT SYSTEM</p> <p><b>4.8. PERSONAL PROTECTIVE EQUIPMENT</b></p> <p>HSE PROCEDURES MANUAL</p>	<p>Sect : 4.8  Page : 2 of 6  Date : 7-Aug-25  Rev : 10.2  Appr : DPA</p>
---	--	---

## PERSONAL PROTECTIVE EQUIPMENT

### 1. GENERAL

- 1.1. Risks to the health and safety of workers on board must be identified and assessed. It will often not be possible to remove all risks but attention should be given to control measures which make the working environment and working methods as safe as reasonably possible.
- 1.2. Personal protective equipment (PPE) should be relied upon to afford protection only against the risks that remain after all other reasonably practicable steps have been taken.
- 1.3. The Company provides appropriate personal protective equipment (PPE) for use on board and provides guidance on when to use it. It is the responsibility of each individual to use it properly and to look after it. PPE is to be kept in good condition and any problems or defects must be reported and defective PPE replaced as soon as practicably possible.
- 1.4. PPE is not to be modified as it may affect integrity of the equipment.
- 1.5. Defective PPE to be removed from service and destroyed (if it cannot be economically repaired or serviced) to ensure it is not accidentally used.
- 1.6. The Master shall ensure that seafarers are provided with appropriately sized personal protective equipment.<sup>1</sup>

### 2. CLOTHING

- 2.1. Clothing appropriate to the work being carried out is to be worn. Personnel working in strong sunlight are to wear clothing providing adequate protection against sunburn and sunstroke. Personnel working in the vicinity of boilers, steam or hot water are to wear long sleeve coveralls or shirts to minimise the danger of burns or scalding. The wearing of loose clothing, neckties, necklaces and even excessively long hair when working in the vicinity of moving machinery is not permitted. Oil soaked or chemically contaminated clothing should be changed to avoid skin irritation. Coveralls are not to be modified (sleeves being cut/removed etc).


#### 2.2. Ear Plugs / Defenders

Personnel working in areas where high noise levels are present are to wear ear plugs or ear defenders. Wherever possible these items are to be issued on a personal basis and not rotated amongst personnel, in order to avoid the possibility of spreading infections etc.

#### 2.3. Footwear

---

<sup>1</sup> W52 / 2024

	<p>HEALTH, SAFETY, ENVIRONMENT AND QUALITY MANAGEMENT SYSTEM</p> <p><b>4.8. PERSONAL PROTECTIVE EQUIPMENT</b></p> <p>HSE PROCEDURES MANUAL</p>	<p>Sect : 4.8  Page : 3 of 6  Date : 7-Aug-25  Rev : 10.2  Appr : DPA</p>
---	--	---

Personnel are issued with safety shoes/boots which are to be worn in working areas. Slippers, clogs, sandals, and similar footwear are not suitable for deck/engine room work. Thong sandals (flip-flops) are not safe footwear on ships.

#### 2.4. **Gloves**

Gloves are provided for work requiring hand protection. There are different types for work of an abrasive, welding and chemical/electrical nature and use of the correct type of glove is essential.

#### 2.5. **Goggles**

These are to be worn by personnel working in areas where foreign bodies could enter the eye. Goggles issued for use with chemicals must be of the correct type. Personnel doing welding are to use the appropriate goggles or face masks. Where possible Ultraviolet screens are to be erected around welding areas.

#### 2.6. **Safety Helmets**


Sufficient safety helmets with chin straps are provided on board for the entire vessel's complement and visitors. These are to be worn at all times that injuries to the head could be anticipated e.g. when personnel are working aloft, whilst cargo is being worked, during emergency activities, stations, and during refit or dry docking. Expiry dates are to be reviewed on the helmet. Safety helmets have a "working life".

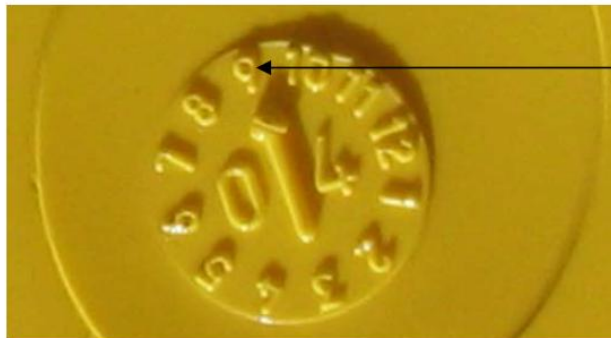
Should the helmet have been damaged or expired (3 years after manufacture date), these are to be discarded and replaced.

- **How to check date of manufacture**

Each helmet, when manufactured, has a year and month of manufacture stamped onto the inside of the shell near the peak for easy reading. The arrow in the stamp points to the month and the year overlays the arrow.

For example, below, the arrow points to 9 and the number is 04 means that the helmet was manufactured in September 2004

	<p>HEALTH, SAFETY, ENVIRONMENT AND QUALITY MANAGEMENT SYSTEM</p> <p><b>4.8. PERSONAL PROTECTIVE EQUIPMENT</b></p> <p>HSE PROCEDURES MANUAL</p>	<p>Sect : 4.8  Page : 4 of 6  Date : 7-Aug-25  Rev : 10.2  Appr : DPA</p>
---	--	---



Note the year is 04 and the arrow points to 9, meaning the hat was manufactured in September 2004

This is where the date of manufacture is located on the hardhat



Ship staff shall also check the approval logo and ensure that all helmets on board are of approved type. While ordering helmets, chin straps are also to be ordered as they are sometimes not interchangeable.

## 2.7. Safety Harness

Safety Harnesses are to be worn by personnel working more than 2 m height above the deck. Safety harness are to be worn at all times while working aloft / over side. Safety harness shall also be worn while climbing down tanks or when using vertical ladders. Suitable lanyard with shock absorber shall be connected to safety harness.


## 2.8. Fall Arrestors

Fall arresting device shall be used in conjunction with safety harness when working aloft, ascending/descending cargo holds/ballast tanks with vertical ladders, ascending/descending masts and ships cranes by their installed ladders etc.

## 2.9. Work Vest<sup>2</sup>

Approved work vests have been provided to all vessels. They shall be used for any over side work like rigging gangway/accommodation ladder, taking ships draft etc.

<sup>2</sup> W 50 / 2018 (Section 2.9 added)

	<p>HEALTH, SAFETY, ENVIRONMENT AND QUALITY MANAGEMENT SYSTEM</p> <p><b>4.8. PERSONAL PROTECTIVE EQUIPMENT</b></p> <p>HSE PROCEDURES MANUAL</p>	<p>Sect : 4.8  Page : 5 of 6  Date : 7-Aug-25  Rev : 10.2  Appr : DPA</p>
---	--	---

Ship staff shall take care of these vests and ensure they are not contaminated by grease, paints etc.

These vests should NOT be washed with strong detergent or cleaner. They are to be inspected before use. They should also be marked with the ships name to ensure they are not stolen. All other unapproved work vest on board shall be collected from all stores and destroyed and land as garbage.

### 3. PPE WHILE USING DENJET<sup>3</sup>


While using DENJET , following PPE which can withstand high pressure shall be used

- Safety helmet with fitted visor and ear muff
- Gloves supplied are 500 bar approved
- Boots with protective shield. Normal steel toe cap boots are NOT suitable for Denjet operations
- Heavy duty [Safety Jacket and trousers](#)<sup>4</sup>.
- Hose protection device.



<sup>3</sup> W 48 / 2017 (Entire Section 3 added)

<sup>4</sup> [W52 / 2024](#)

	<p>HEALTH, SAFETY, ENVIRONMENT AND QUALITY MANAGEMENT SYSTEM</p> <p><b>4.8. PERSONAL PROTECTIVE EQUIPMENT</b></p> <p>HSE PROCEDURES MANUAL</p>	<p>Sect : 4.8  Page : 6 of 6  Date : 7-Aug-25  Rev : 10.2  Appr : DPA</p>
---	--	---

## 4. APPLICABILITY

- 4.1. Crewmembers are required to wear and use the PPE that has been issued to them when appropriate, and to comply with any training and instruction provided. Failure to do so is considered an offence and may result in disciplinary action being taken.
- 4.2. Specialised PPE such as Self-Contained Breathing Apparatus or Chemical Suits must be properly stored and easily accessible. Instructions on the use of the equipment should be displayed and available to crewmembers in the Training Manual on board. The equipment must be regularly inspected and maintained in accordance with the manufacturer's instructions, and its operation checked. Respiratory protective equipment must always be checked before and after use.
- 4.3. Crewmembers are to be given appropriate on-board training so that they are aware of risks against which the PPE is designed to protect them, and of when and how to use it and look after it properly. This may include demonstrations of the wearing of PPE, where appropriate.
- 4.4. Visitors, shore side personnel and contractors are expected to wear appropriate PPE when on board. A small stock of safety helmets, safety glasses and disposable ear defenders should be kept on board for this purpose.
- 4.5. Reference should be made to the **MCA Code of Safe Working Practices for Merchant Seamen**, Chapter on Personal Protective Equipment, and to Preferred Equipment Types in section 4.19 of this manual.
- 4.6. For guidance, a "Personal Protective Equipment Guide" chart has been prepared detailing the Company's mandatory and recommended requirements regarding what equipment should be used and when it should be used (see Appendix A).

**Note:** The list of PPE to be used is a general list that does not specify the particular type of equipment to use. For example "Eye Protectors" could refer to ordinary safety glasses or special gas/chemical tight goggles or welding goggles. When using this chart it is important to make sure that appropriate type of PPE is used suitable to the job and associated risks involved.